

**Features:**

- \* Double row Side Entry.
- \* 2.54mmX7.87mm center.

**Material:**

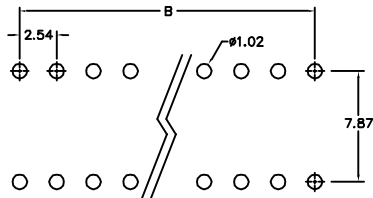
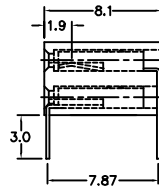
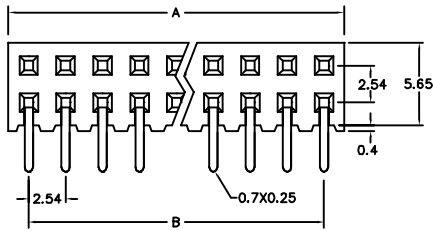
Housing: 30% Glass filled PBT UL94V-0.  
 Contacts: Phosphor Bronze.  
 Plating: Gold plated over nickel.  
 Tin plated over nickel.

**Electrical Characteristics:**

Current Rating: 1 AMP.  
 Insulator Resistance: 5000MΩmin. at DC 500V.  
 Contact Resistance: 20mΩmax. at DC 100mA.  
 Operating Temperature: -55°C ~ +105°C.

**Mechanical Characteristics:**

Insertion Force: 140g avg.(0.64mm sq. pin)  
 Withdrawal Force: 114g avg.(0.64mm sq. pin)



P.C. Board Layout

Position	6 Thru 80
Dimension	
A	2.54 X No. of Positions /2
B	2.54 X No. of Positions /2-2.54

**Ordering information**

PS10- 2 40 1  
 Series Double Row No. of Pin Per Row 1: Gold Plated 2: Tin Plated